

About the Office of Community Engagement

Building upon a strong tradition of engagement across the disciplines, the IUPUI **Office of Community Engagement** (OCE) was launched in January of 2015 as a priority within the **IUPUI Strategic Plan**. OCE provides campus leadership to deepen the campus culture, promote strategic community engagement, and assess the impact of IUPUI student, faculty, and staff engagement with the community.

OCE is committed to cultivating knowledge, relationships, and resources through collaborations that contribute to healthy and vibrant communities, fostering mutual growth, equity, and social justice; strengthening our commitment to democratic engagement; advancing university and campus goals; and preparing civic-minded graduates and professionals.

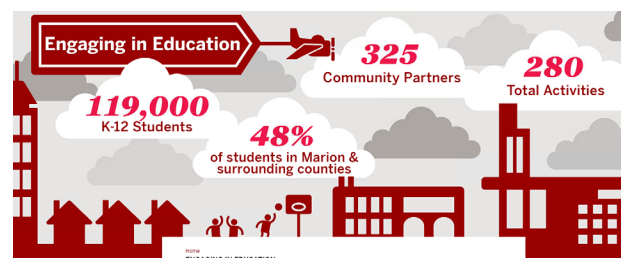
Research ▪ Teaching ▪ Professional Development ▪ Collaboration ▪ Economic Impact ▪ Civic Engagement

Areas of Support

- Community-Engaged Research
 - Community Engaged Research Group
 - Engage! Journal
 - Workshops & Convenings
 - Funding Opportunities
 - Potential Partners
- Research, Scholarship, and Program Evaluation
- Information about, and Assessment of, Community-Engaged Activities
- Community-Engaged Teaching
 - Curriculum Design
 - Civic Learning and Development
 - Community Project Planning
- Community and Economic Development
- Anchor Institution Role
- Civic and Political Engagement



Faculty, staff, students and community partners learn from each other at the Community Engaged Research Conference.



IUPUI programs and partnerships help K-12 students succeed

As an anchor institution, IUPUI is invested in student success, not just for our students but elementary, middle and high school students too.

We educate future teachers, provide professional development to current teachers, and partner with schools and school systems to improve learning in the classroom. We also improve academic attainment, prepare students for higher education and interest students in new career paths through camps, competitions, tutoring and mentoring and college preparation programs.

Using information entered in Collaboratory, we can better tell the story of IUPUI's engagement in the community and its impact.



Frequently Asked Questions

1. WHAT IS COMMUNITY ENGAGEMENT AND WHY IS IT A PRIORITY FOR IUPUI?

The [Carnegie Foundation](#) definition of community engagement describes the collaboration between institutions of higher education and their larger communities as the mutually beneficial exchange of knowledge and resources. Community engagement is the way IUPUI works with community partners, fostering relationships so that faculty, staff and students contribute to the well-being of the people of Indianapolis, the state of Indiana, and beyond. Through research and creative activity, teaching and learning, and by leveraging campus resources, community engagement accelerates innovation and discovery and addresses local and global community-identified needs.

2. WHAT IS COMMUNITY-ENGAGED SCHOLARSHIP AND WHERE CAN I GAIN SUPPORT FOR RESEARCH AND PUBLIC SCHOLARSHIP?

Community-engaged scholarship refers to scholarly activities that involve collaboration of students, community partners, and faculty as co-educators, co-learners, and co-generators of knowledge that address public concerns. The campus [Community Engaged Research Group](#) provides workshops, access to funding, proposal development and support for community-engaged research strategies. The Office of Community Engagement also publishes the [Engage! Journal](#) which features community-engaged and community-based participatory research.

3. WHERE CAN I LEARN HOW TO INTEGRATE COMMUNITY-ENGAGED LEARNING INTO TEACHING?

Through individual consultations, online resources, and workshops, staff at the [Center for Service and Learning](#) provide support for course and curriculum design. Faculty can sign-up to be part of the Service Learning listserv to receive regular updates.

4. WHERE CAN I FIND COLLABORATORS AND SHARE MY ACTIVITIES?

Launched in 2017, [Collaboratory™](#) is a publicly accessible and searchable web-based platform that tracks and monitors partnerships and community engagement activities (e.g., community-based research and creative activity, projects, events, course-based experiences, programs). This information is used to populate the IUPUI [Community Engagement Map](#). Collaboratory is accessible through one.iu.edu.

5. ARE THERE RESOURCES TO SUPPORT THE INVOLVEMENT OF STUDENTS IN COMMUNITY ENGAGED RESEARCH, TEACHING, AND SERVICE ACTIVITIES?

IUPUI has one of the largest service-based scholarship programs in the country. Faculty and staff may apply for a [Community Engagement Associates](#) scholarship to involve an undergraduate or graduate student as an assistant to support community engagement.

6. HOW CAN I LEARN ABOUT VOLUNTEER OPPORTUNITIES IN THE COMMUNITY?

The [Center for Service and Learning](#) maintains information on potential community service projects.

7. HOW CAN I INCORPORATE CIVIC LEARNING IN MY CURRICULUM OR CLASSROOM?

IU policies on allowable political activities are linked from the [Office of Community Engagement](#) website. The engage.iupui.edu/vote site also has information on voter registration, important dates and offices on campus involved civic education. The [Center for Service and Learning](#) has several resources on why and how to incorporate civic learning and democratic engagement in the classroom.

8. IS IUPUI INVOLVED IN ANY NATIONAL ORGANIZATIONS RELATED TO COMMUNITY ENGAGEMENT?

IUPUI is actively engaged in the [Coalition of Urban and Metropolitan Universities](#) and its [Anchor Learning Network](#), the [Association of Public and Land-Grant Universities](#) and its [Commission on Economic and Community Engagement](#), the [American Association of State Colleges and Universities](#) and its [American Democracy Project](#), and the [Anchor Institutions Task Force](#).